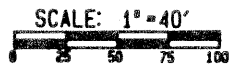
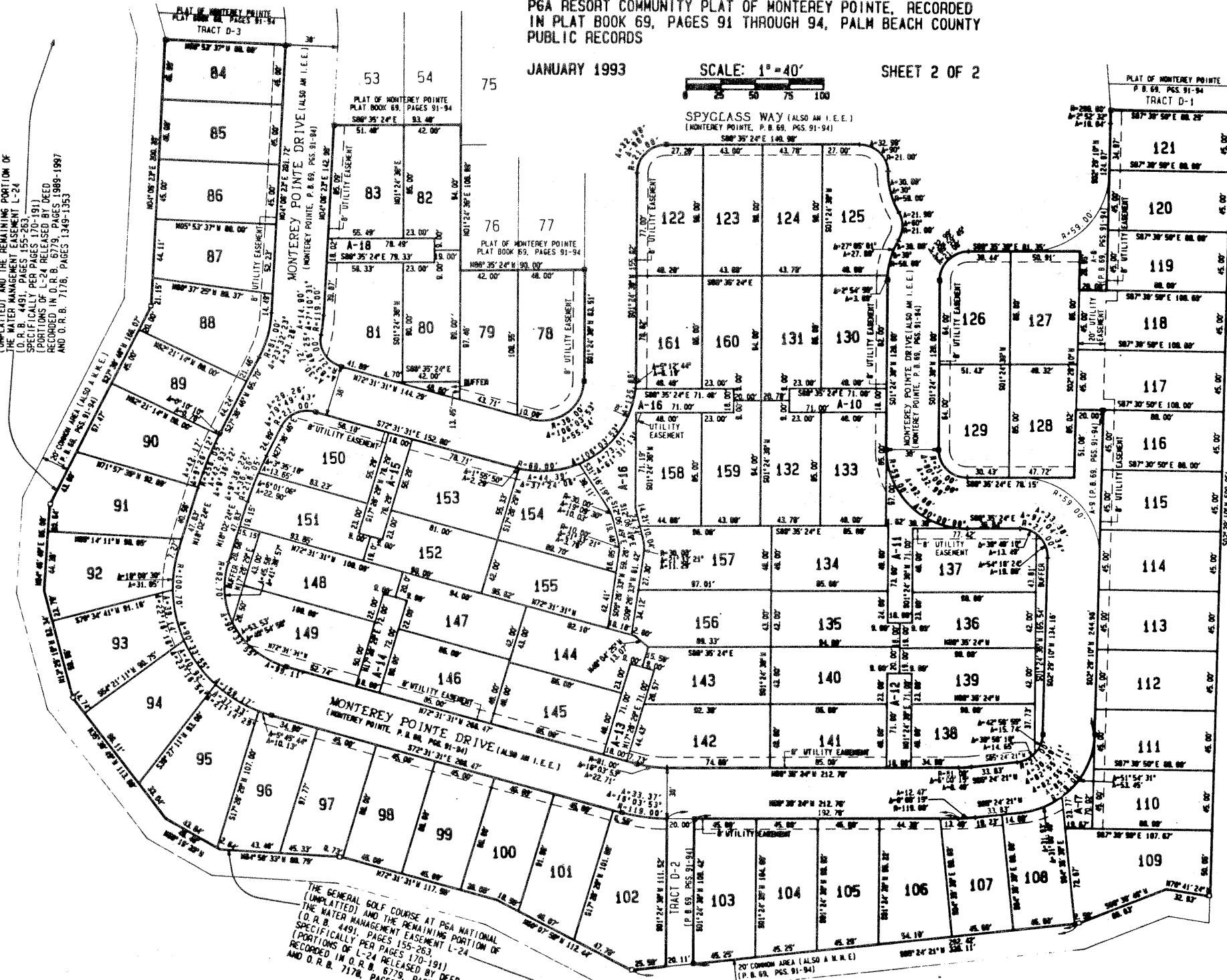


A PLANNED UNIT DEVELOPMENT IN PGA NATIONAL PLANNED COMMUNITY DISTRICT  
 PGA RESORT COMMUNITY PLAT OF  
**MONTEREY POINTE NO 2**  
 LYING IN SECTION 15, TOWNSHIP 42 SOUTH, RANGE 42 EAST,  
 CITY OF PALM BEACH GARDENS, PALM BEACH COUNTY, FLORIDA  
 BEING A REPLAT OF TRACTS B-1, B-2, B-3, AND B-4 OF  
 PGA RESORT COMMUNITY PLAT OF MONTEREY POINTE, RECORDED  
 IN PLAT BOOK 69, PAGES 91 THROUGH 94, PALM BEACH COUNTY  
 PUBLIC RECORDS

JANUARY 1993 SCALE: 1"=40' SHEET 2 OF 2



THE GENERAL GOLF COURSE AT PGA NATIONAL (UNPLATTED) AND THE REMAINING PORTION OF THE WATER MANAGEMENT EASEMENT L-24 (O.R.B. 4491, PAGES 155-263) SPECIFICALLY PER PAGES 170-191 (PORTIONS OF L-24 RELEASED BY DEED RECORDED IN O.R.B. 6779, PAGES 1349-1353 AND O.R.B. 7178, PAGES 1349-1353)



THE GENERAL GOLF COURSE AT PGA NATIONAL (UNPLATTED)

- NOTES
1. "B" DENOTES PERMANENT REFERENCE MONUMENT (P.R.M.) NO. 3426 SET.
  2. "D" DENOTES PERMANENT REFERENCE MONUMENT (P.R.M.) NO. 3428 FOUND BEARINGS BASED ON: 82°21'10" ALONG THE EAST BOUNDARY OF PGA RESORT COMMUNITY PLAT OF MONTEREY POINTE, PLAT BOOK 69, PAGES 91-94 OF THE PUBLIC RECORDS OF PALM BEACH COUNTY, FLORIDA.
  3. "MPCWD" DENOTES NORTHERN PALM BEACH COUNTY WATER CONTROL DISTRICT.
  4. "WME" - DENOTES A WATER MANAGEMENT EASEMENT IN FAVOR OF THE NORTHERN PALM BEACH COUNTY WATER CONTROL DISTRICT.
  5. "IEE" - DENOTES AN INGRESS-EGRESS EASEMENT IN FAVOR OF THE NORTHERN PALM BEACH COUNTY WATER CONTROL DISTRICT.
  6. "O.R.B." - DENOTES OFFICIAL RECORD BOOK.
  7. ALL LOT LINES ARE NON-RADIAL UNLESS OTHERWISE NOTED.
  8. THERE SHALL BE NO BUILDINGS, STRUCTURES, CONSTRUCTION OF ANY KIND, TREES OR SHRUBS PLACED ON THE WATER MANAGEMENT EASEMENT L-24, SHOWN HEREON, RECORDED IN OFFICIAL RECORD BOOK 4491, PAGES 155 THROUGH 263, AT PAGES 170 THROUGH 191, AND AMENDED IN OFFICIAL RECORD BOOK 7178, PAGES 1349 THROUGH 1353, UNLESS APPROVED, IN PERMIT FORM, BY THE NORTHERN PALM BEACH COUNTY WATER CONTROL DISTRICT.
- AREA TABLE:  
 TRACT B-1, LOTS 84-102, 1.975 ACRES  
 TRACT B-2, LOTS 103-121 AND LOTS 126-128, 2.274 ACRES  
 TRACT B-3, LOTS 122-125 AND LOTS 130-161, 3.375 ACRES  
 TRACT B-4, LOTS 78-83, 0.651 ACRES  
 TOTAL AREA = 8.674 ACRES

11777

THE GENERAL GOLF COURSE AT PGA NATIONAL (UNPLATTED) AND THE REMAINING PORTION OF THE WATER MANAGEMENT EASEMENT L-24 (O.R.B. 4491, PAGES 155-263) SPECIFICALLY PER PAGES 170-191 (PORTIONS OF L-24 RELEASED BY DEED RECORDED IN O.R.B. 6779, PAGES 1349-1353 AND O.R.B. 7178, PAGES 1349-1353)

NOTICE: THERE MAY BE ADDITIONAL RESTRICTIONS THAT ARE NOT RECORDED ON THIS PLAT THAT MAY BE FOUND IN THE PUBLIC RECORDS OF PALM BEACH COUNTY.

THIS INSTRUMENT WAS PREPARED BY:  
 MARK D. BROOKS  
 PROFESSIONAL LAND SURVEYOR  
 STATE OF FLORIDA NO. 3426  
 FOR: TIMOTHY J. MESSLER, INC.  
 600 SANDTREE DRIVE  
 SUITE 301  
 PALM BEACH GARDENS, FL 33403

**Timothy J. Messler, Inc.**  
 CONSULTING ENGINEERS

600 Sandtree Drive, Suite 301, Palm Beach Gardens, Florida 33403

DATE: OCTOBER 1992